

KÜRDİLİHICAZKAR ŞARKI


BESTE: ALĀREDDİN YAVAŞCA

5: TANEL YAGLAHAN

AKS AK

KODA

KODA



Söy- le ba- na ..... rû- hunun..... ne- dir

Söy- le ba- na ..... rû- hunun..... ne- dir

es-      râ- ..... r1 ka-din ..... ne-dir

es-      râ- ..... r1 ka-dın

Handwritten musical notation for the first system of 'The Rose Tree'. The music is written on a single staff in G major (one sharp) and 4/4 time. It begins with a treble clef and a key signature of one sharp (F#). The melody starts with a quarter note G4, followed by an eighth note A4, and then a quarter note B4. This is followed by a half note C5, then a quarter note B4, and another half note C5. The next measure contains a quarter note A4, an eighth note G4, and a quarter note F#4. This is followed by a half note E4, then a quarter note D4, and another half note C4. The system ends with a double bar line. Above the staff, there are two numbers: '1' above the first measure and '2' above the second measure. The notation is handwritten and appears to be a student exercise.


Ol- ma- di- mi ..... gön- lü- nün ..... bir an

him an' take

ba-ha-..... ri ka-din ..... bir an baha-.....

...ri ka-din

....ri ka-din 2



MİYAN



İş-te gö- nül..... bah- çem- den..... dört mev-sim ve-



re-yim ben ..... dört mev- sim..... ve-



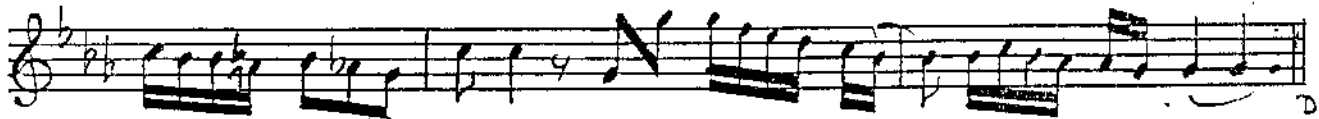
re- yim... ben ----- S A Z -----



----- Bir-leş-Sin .....



rûh- la- rı- mız ..... bı-rak ı-s- râ-.... rı ka-



dın ..... bı-rak ı-s- ra-..... rı ka- dan SON

Beste Tarihi: 19 Eylül 1993 Petrokent

Beste : Dr. Alâeddin Yavaşca

Güfte : Taner Çazlayan

Söyle bana rûhunun nedir esrârı kadın

Olmadımı gönlünün bir an baharı kadın

İste, gönül bahçemden dört mevsim vereyim ben

Birleşsin rûhlarımız bırak ısrârı kadın

Aytaç ERGEN